

3rd NEWSLETTER

August 2024 - May 2025



Overview

Welcome to the final **ShapeMS** newsletter! As our project comes to a close, we're excited to share the latest updates, key milestones, and final outcomes. But in case you're new here... What is **ShapeMS**? It's a European project that has developed an online learning platform covering work-related aspects concerning people with multiple sclerosis (MS) and employers.

Inclusive learning means giving everyone the tools to succeed, in their own way, that's why accessibility is a core value for us. Thanks to user feedback, we've added a **Dyslexia Mode Plugin** to our platform so that users can activate a font designed to make reading easier for people with dyslexia and even for people with MS.

In this final newsletter, discover what we've achieved: from pilot experiences and events to our final deliverables and the legacy we're proud to leave behind. Let's celebrate the impact we've created together!

CONTENT

OVERVIEW

EVENTS

TPM IN SPAIN

PILOT PROCESS

DELIVERABLES

CLOSING MESSAGE



IEEN
Cyprus



CAMINOS
Spain



KI-I
Austria



CDPZ
Italy



ÜAÖSD
Turkey



EUROSC
Cyprus



Events

OUTREACH IN TURKEY

On October 30th, 2024, the **ShapeMS** project was presented during an event at Akdeniz University in Antalya, Turkey. It was organised by **UÜAÖSD** and hosted by Lecturer Gür Ali Telli, a strong advocate for the project and a key local partner. His dedication played a major role in bringing together a wide audience of academics, students, and professionals to discover the **ShapeMS** platform.

Throughout the session, participants were introduced to the project's aims, its inclusive online platform, and the various tools developed to support the employment and empowerment of people with MS. The event fostered active engagement, with many attendees showing interest in further collaboration and use of the platform within academic and professional networks.

Thanks to the support of Akdeniz University and the energy of all participants, the event was a great success. It not only boosted the project's visibility in Turkey but also reinforced the importance of academic involvement in driving social change. With this momentum, the Turkish team is now even more committed to continuing the dissemination of **ShapeMS** and promoting inclusive opportunities for people with MS.

CONTENT

OVERVIEW

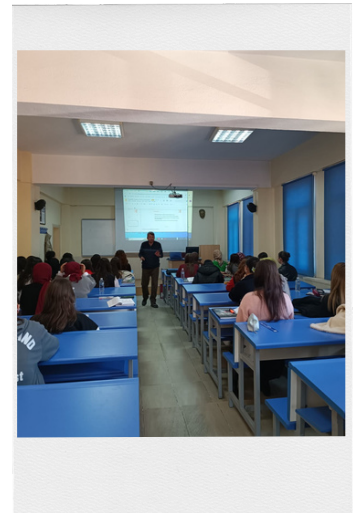
EVENTS

TPM IN SPAIN

PILOT PROCESS

DELIVERABLES

CLOSING MESSAGE



Events

FINAL CONFERENCE IN CYPRUS

As **ShapeMS** reaches its final stage, interested parties will gather in Cyprus for a special event organised by **EUROSC** on the 27th of May, to share the project's outcomes, discuss the field trial results, and explore sustainable ways forward.

This final conference is open to all stakeholders, from employers and educators to healthcare professionals and people with MS. Together, we will reflect on the piloting phase, the experiences of people with MS, their everyday struggles and how can tools developed in projects such as **ShapeMS** improve their lives.

In addition to showcasing the platform's impact, the event will offer a space for dialogue, collaboration, and commitment to building more inclusive workplaces. It marks not just the closing of a project, but the opening of a lasting conversation about employment and empowerment for people with MS in Europe.

Stay tuned for more details about this final step of the **ShapeMS** journey!

CONTENT

OVERVIEW

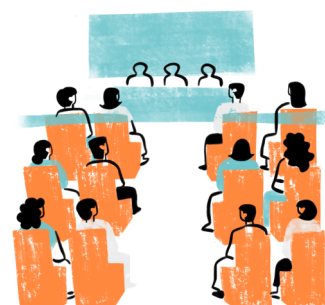
EVENTS

TPM IN SPAIN

PILOT PROCESS

DELIVERABLES

CLOSING MESSAGE



TPM in Spain

On March 27th, 2025, the third and final transnational meeting of the **ShapeMS** project was held in Torre del Mar, Spain. Organised by **Asociación Caminos**, the meeting brought together partners from Spain, Cyprus, Turkey, Austria, and Italy to reflect on the progress made and to coordinate the final stages of the project. This face-to-face exchange provided a valuable opportunity to gather feedback from all countries, and ensure the long-term impact of the project's outcomes.

During the meeting, partners discussed the sustainability of the **ShapeMS** learning platform, including ways to continue sharing its tools and resources beyond the project's official end. They also worked on planning the final conference in Cyprus, reviewing deliverables, and aligning dissemination efforts.

The atmosphere was collaborative and energising, with all organisations reaffirming their commitment to supporting people with MS in accessing fair and inclusive employment. The **ShapeMS** project has demonstrated the power of European cooperation to address social challenges, and this final meeting marked both an end point and a new beginning in the journey toward inclusive workplaces.

CONTENT

OVERVIEW

EVENTS

TPM IN SPAIN

PILOT PROCESS

DELIVERABLES

CLOSING MESSAGE



Pilot process

Over the past few months, **ShapeMS** has carried out a piloting phase across all partner countries, engaging its four key target groups: people with MS, mentors, employers, and caregivers.

This phase allowed us to test the learning platform and collect valuable feedback to improve its content and usability. Through active participation in training modules, users helped us fine-tune the platform to better reflect their needs and challenges.

One of the unique features tested during this phase was our digital **badge system**, designed to recognise learning achievements and support personal development. Whether you are an employer or a person living with MS, the platform offers you the opportunity to earn badges and become part of a wider network committed to inclusion and solidarity.

Thanks to all participants, the **ShapeMS** platform will be more accessible, targeted, and ready to make a meaningful difference. The feedback collected will guide the final updates before the final launch. We invite you to use the platform in your daily life from now on!

CONTENT

OVERVIEW

EVENTS

TPM IN SPAIN

PILOT PROCESS

DELIVERABLES

CLOSING MESSAGE



Deliverables

The **ShapeMS** partnership has developed a wide range of resources, all freely accessible!

Among the main deliverables is a **Step-by-step guide for employers**, designed to help them understand how to support people with MS in the workplace. Users can also explore **over 20 training modules** covering not only employment-related topics, but also personal development, communication, mental health, entrepreneurship, and mentoring.

Additionally, an **Informational toolkit** aimed at employers, entrepreneurs, and staff members is available. This resource provides insights into the specific needs of people with MS, government funding, and educational content for building more inclusive environments.

To complement the learning materials, a series of **testimonial videos** have been produced in all partner countries. These videos share real stories, raise awareness about MS, and highlight how the **ShapeMS** platform can support both individuals with MS and those working alongside them.

🔗 Explore the full range of materials and start your journey at our **project's website**, where you will also find a direct link to the **learning platform**!

CONTENT

OVERVIEW

EVENTS

TPM IN SPAIN

PILOT PROCESS

DELIVERABLES

CLOSING MESSAGE



Closing message

THE END OF A BEGINNING

As the **ShapeMS** project comes to an end, our commitment to inclusion continues. We believe that every person living with MS deserves the opportunity to work with dignity, to be seen for their talents, and to be supported in achieving their full potential. Throughout this project, we've not only built tools and training resources, we've built connections, understanding, and a shared vision for a more inclusive future.

To all who contributed, participated, and believed in this mission: **thank you**. Your voices, experiences, and efforts have made **ShapeMS** a meaningful initiative, and your engagement ensures its impact will last well beyond the project's timeline.

Let's continue raising awareness, breaking down barriers, and affirming the value of every person — with or without MS — in the workplace and beyond. The journey is just beginning. Stay connected with us and keep spreading the message to keep shaping the future of people with MS!

CONTENT

OVERVIEW

EVENTS

TPM IN SPAIN

PILOT PROCESS

DELIVERABLES

CLOSING MESSAGE

Be sure to visit the project's website, platform and channels to further enrich yourself with the resources offered by ShapeMS!

